



Mouse anti Keratin 7 Monoclonal Antibody

Alternative Name(s): CK-7; cytokeratin 7; KRT7

Order Information

- **Description:** Cytokeratin 7
- **Catalogue:** 606-460
- **Lot:** See label
- **Size:** 100ug/200ul
- **Host:** Mouse
- **Clone:** ABM270
- **Application:** IHC(P), WB
- **Reactivity:** Hu, Ms

ANTIGEN PREPARATION

A recombinant protein of CK7

BACKGROUND

The protein cytokeratin 7 is a member of the keratin gene family. The type II cytokeratins consist of basic or neutral proteins which are arranged in pairs of heterotypic keratin chains coexpressed during differentiation of simple and stratified epithelial tissues. This type II cytokeratin is specifically expressed in the simple epithelia lining the cavities of the internal organs and in the gland ducts and blood vessels. Epithelial cells of the lung and breast both contain keratin-7. Positive CK7 expression was detected in patients with lung cancer; positive expression of CK7 associated with pathological features of lymph node metastasis and T stage may be independent clinical parameters for poor prognosis of patients with lung cancer.

PURIFICATION

The mouse IgG is purified by Protein A-Affinity Chromatography according to Isotyping

FORMULATION

This affinity purified antibody is supplied in sterile Phosphatebuffered saline (pH7.2) containing antibody stabilizer

SPECIFICITY

This antibody recognizes Cytokeratin 7 protein. It cross reacts to human and mice.

STORAGE

The antibodies are stable for 24 months from date of receipt when stored at -20°C to -70°C . The antibodies can be stored at 2°C - 8°C for three month without detectable loss of activity. Avoid repeated freezing-thawing cycles.

APPLICATIONS/SUGGESTED WORKING DILUTIONS*

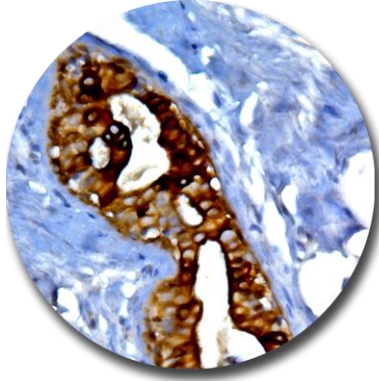
- Western Blot: 0.1-1 $\mu\text{g}/\text{ml}$
- ELISA: 0.01-0.1 $\mu\text{g}/\text{ml}$
- Immunoprecipitation: 2-5 $\mu\text{g}/\text{ml}$
- IHC: 2-10 $\mu\text{g}/\text{ml}$
- Flow cytometry: Not tested
- Molecular Weight: 51.4
- Positive Control: Kidney Tissue
- Cellular Location: Cell Membrane

*Optimal dilutions should be determined by researchers for the specific applications.

FOR RESEARCH USE ONLY.

AbboMax, Inc 2528 Qume Drive, Suite 8, San Jose, California 95131, USA
1 408-573-1898 (Tel). 1 408-573-1858 (Fax). www.abbomax.com info@abbomax.com

DATA ATTACHMENTS



Immunohistochemistry: Human breast carcinoma (FFPE) stained with Mouse anti-Cytokeratin-7 (Clone ABM270) (Cat# 606-460) at 1:200 for 10 min @ RT. Staining of formalin-fixed tissue requires boiling tissue sections in 10 mM Citrate Buffer, pH 6.0 for 10 min followed by cooling at RT for 20 min.

REFERENCES

FOR RESEARCH USE ONLY.